

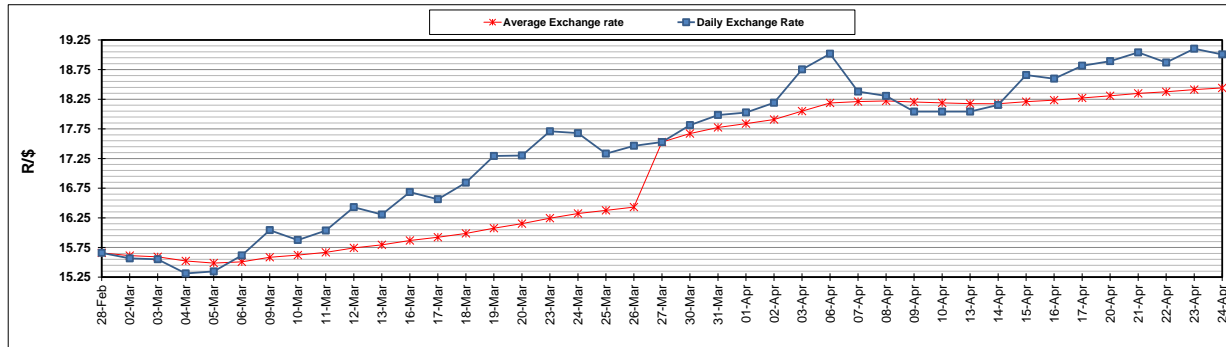
	PETROL 95 ULP	PETROL 93 ULP & LRP	DIESEL 0.05%	DIESEL 0.005%	ILL. PAR.
GAUTENG PUMP PRICE (SA c/l) AS FROM 01/04/2020	1,396.000	1,376.000	-	-	-
WHOLESALE PRICE (SA c/l) AS FROM 01/04/2020	-	-	1,269.560	1,273.960	672.828
SINGLE NATIONAL MAXIMUM RETAIL PRICE	-	-	-	-	840.000
BASIC FUEL PRICE - 24/04/2020 (SA c/l)	270.193	257.081	256.241	264.981	147.594
PRESS RELEASE CONTRIBUTION TO BFP 01/04/2020 - 24/04/2020 (SA c/l)	448.770	438.770	518.630	523.030	468.128
UNIT OVER/(UNDER) RECOVERY - 24/04/2020 (SA c/l)	178.577	181.689	262.389	258.049	320.534
AVERAGE BASIC FUEL PRICE 27/03/2020 - 24/04/2020	305.901	298.773	396.503	406.598	290.134
AVERAGE UNIT OVER/(UNDER) RECOVERY 27/03/2020 - 24/04/2020	174.183	169.597	145.699	140.146	206.280

ANALYSIS MOVEMENT OF AVERAGE OVER/(UNDER) RECOVERY

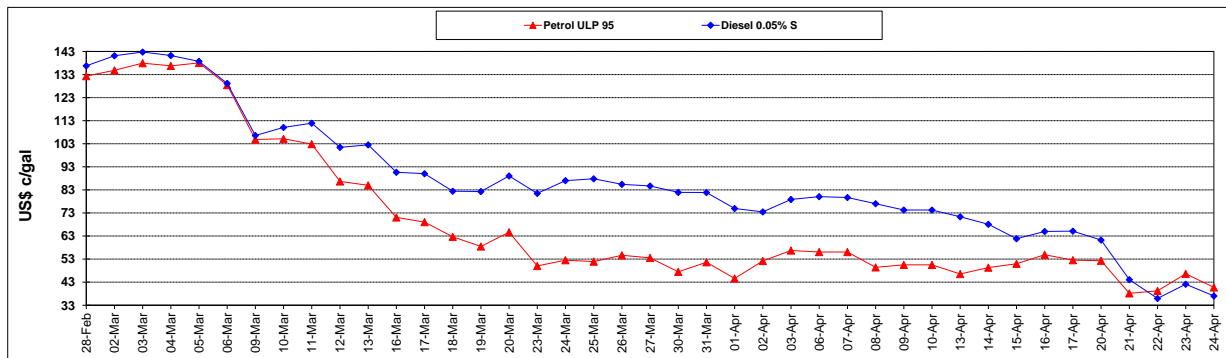
	PETROL 95	PETROL 93	DIESEL 0.05%	DIESEL 0.005%	ILL. PAR.
- MOVEMENT IN INTERNATIONAL PRODUCT PRICES	207.532	202.169	188.924	184.473	237.910
- MOVEMENT IN EXCHANGE RATE	(33.349)	(32.572)	(43.226)	(44.327)	(31.630)
AVERAGE UNIT OVER/(UNDER) RECOVERY 27/03/2020 - 24/04/2020	174.183	169.597	145.699	140.146	206.280

R/\$ EXCHANGE RATE - (R/\$19.0064 - 24/04/2020)

EXCHANGE RATE USED IN BASIC FUEL PRICE



INTERNATIONAL PRODUCT PRICES OF BASKET USED IN BASIC FUEL PRICE



BASIC FUEL PRICE IN SA CENTS PER LITRE

